



GMT MONTHLY MEMBERSHIP PROGRESS REPORT

Results as of: 6/30/2020

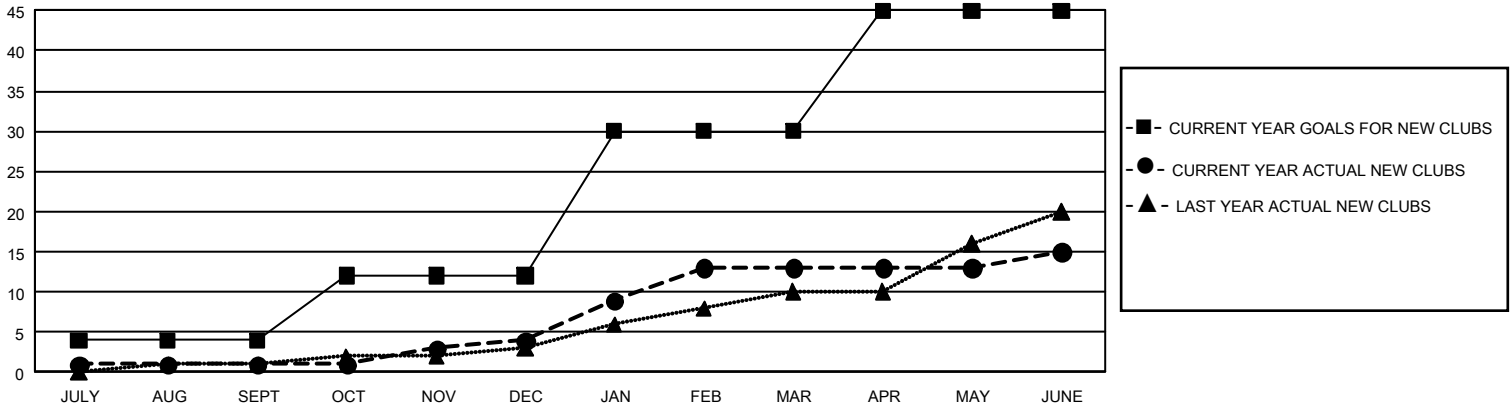
GMT Constitutional Area 4, Group E

GMT: OPEN

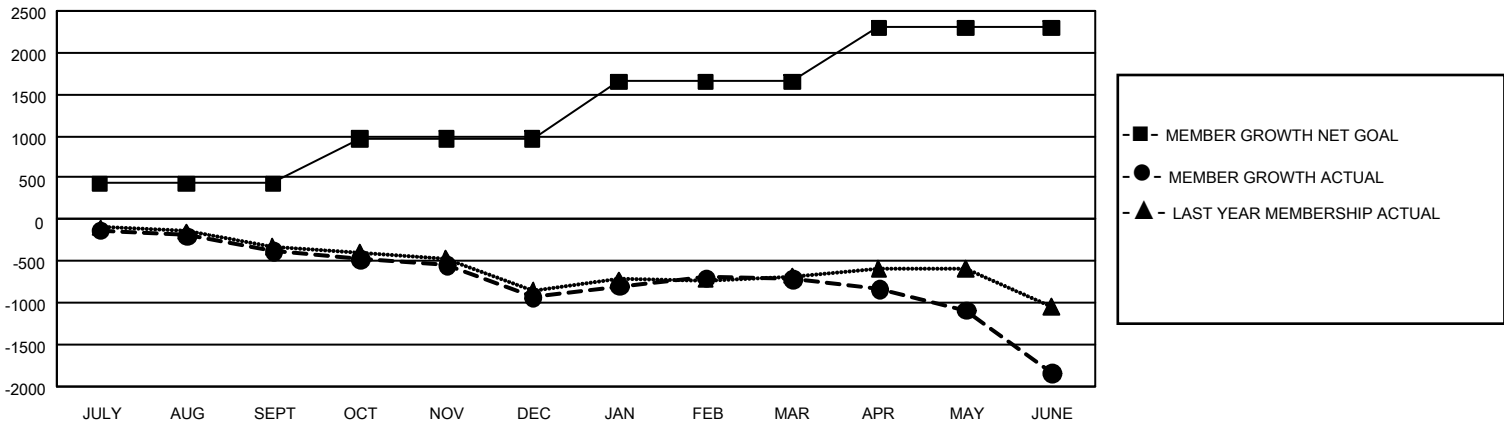
REPORT DOES NOT INCLUDE CLUBS IN UNDISTRICTED AREAS.

Clubs				Members			
RESULTS FOR 2019-2020				RESULTS FOR 2019-2020			
QUARTER	NEW CLUB GOAL	NEW CLUBS	DROPPED CLUBS	QUARTER	MEMBER GROWTH NET GOAL	MEMBER GROWTH ACTUAL	DROPPED MEMBERS ACTUAL (including transfers)
JULY/AUG/SEPT	12	1	11	JULY/AUG/SEPT	1,284	530	796
OCT/NOV/DEC	24	3	7	OCT/NOV/DEC	1,599	678	1,094
JAN/FEB/MAR	54	9	6	JAN/FEB/MAR	2,079	1,010	676
APR/MAY/JUNE	45	2	7	APR/MAY/JUNE	1,935	589	1,552

GOALS AND ACTUAL NEW CLUBS CUMULATIVE



GOALS AND ACTUAL MEMBERS CUMULATIVE



DROPPED CLUBS: 31	978 CLUBS OF 1,788 ADDED 1 OR MORE NEW MEMBERS	<u>GENDER DISTRIBUTION</u> MALE 29,535 (76.25%) FEMALE 9,200 (23.75%)
<u>DROPPED MEMBERS</u> DECEASED 454 CLUB CANCELLED 82 OTHER 3,581 <hr/> TOTAL 4,117	CLICK HERE FOR CUMULATIVE MEMBERSHIP DATA	TOTAL FAMILY UNIT MEMBERS 1,305 FAMILY MEMBERS PAYING HALF DUES 664